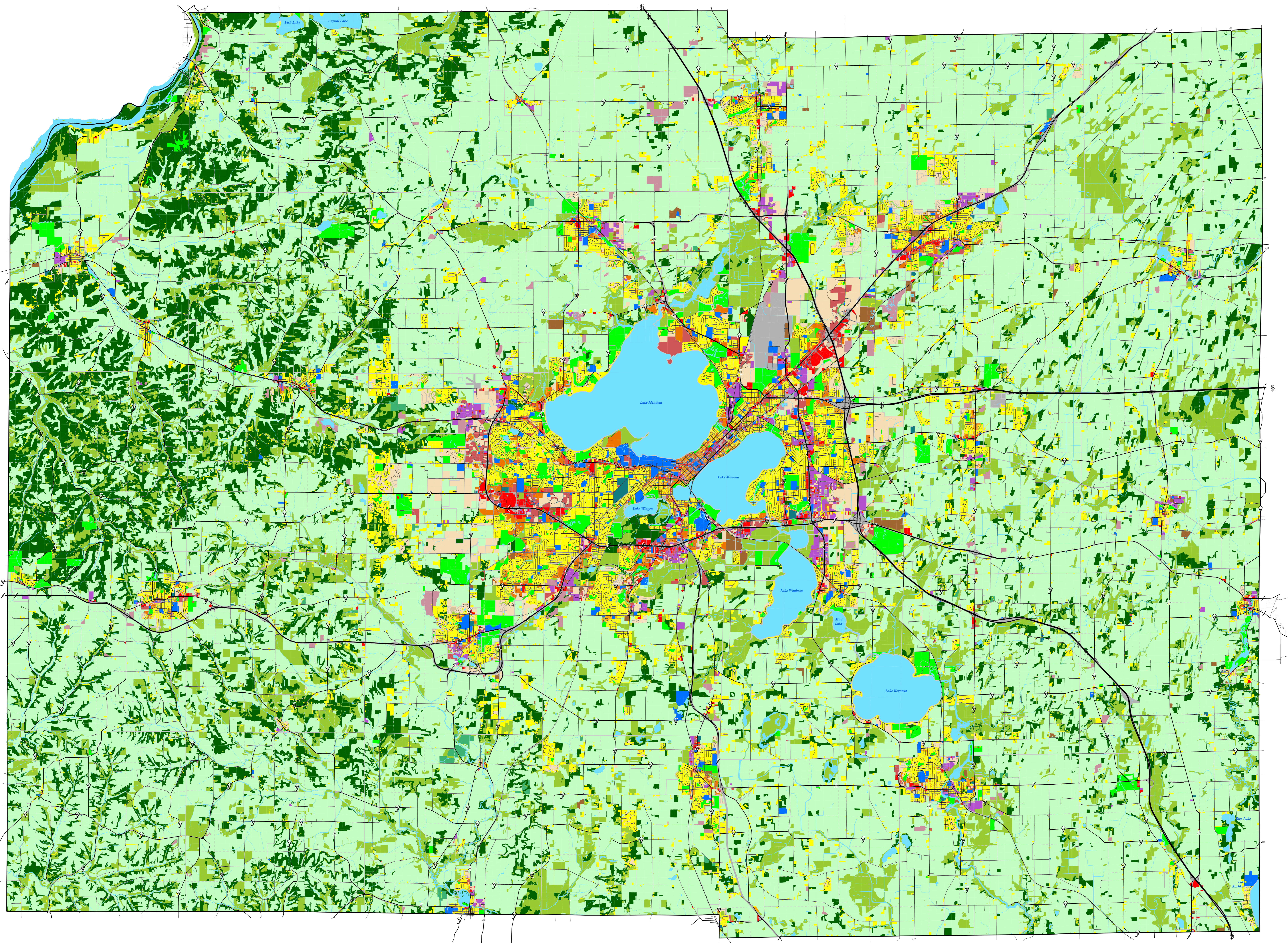


# 2000 Land Use

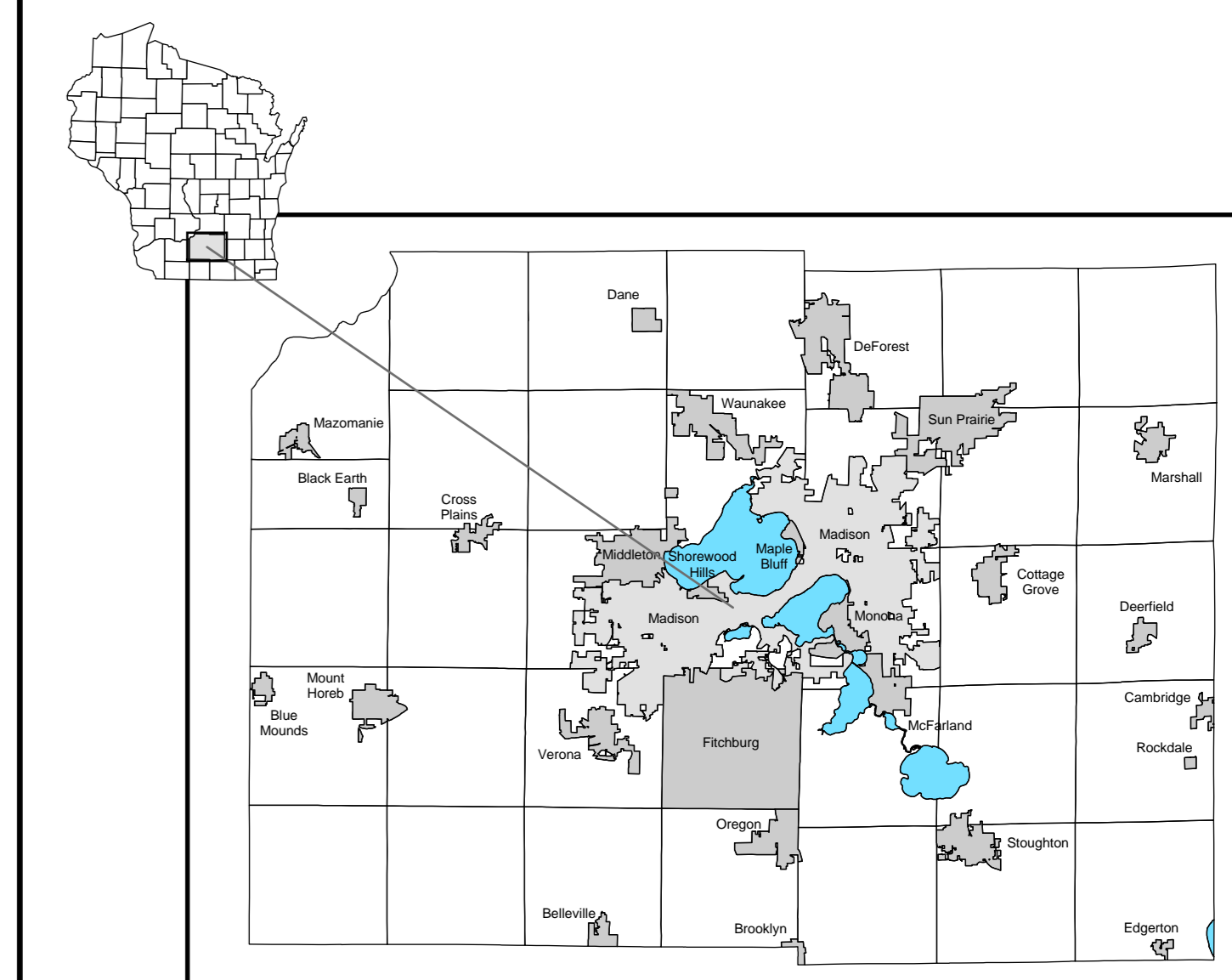
## Dane County, Wisconsin



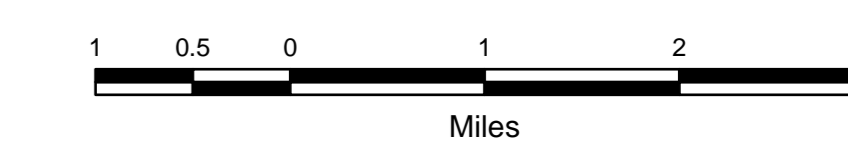
- Commercial - Retail Sales
- Commercial - Retail Services
- Single Family
- Two Family
- Multi-Family
- Industrial
- Extractive
- Institutional / Governmental
- Transportation
- Communication & Utilities
- Vacant
- Under Construction
- Cemeteries
- Agriculture
- Outdoor Recreation
- Commercial Forest
- Woodland
- Undeveloped (non-agriculture)

- Farm Dwelling (with residence)
- Farm Building (without residence)
- Animal Husbandry

- Perennial Stream
- Intermittent Stream
- Water Body



Prepared by staff for the  
**M·P·O**  
 Metropolitan Planning Organization  
 Transportation Planning Services  
 Rev: 6/18/2002



1:62,500  
 1 inch = approx. 1 mile

Lambert Conformal Conic Projection  
 Dane County Coordinate System - NAD 83(91)

Source Info:  
 Land Use: 400, (MAMPO/DCRP)  
 Hydrography: 1200, 1:24,000 (WI/NR)  
 Street Base: 400, Orthophoto Derived (MAMPO, DCL/DJ)  
 Civil Division Limits: 800, Assessor Records (MAMPO)

NAME: jsh  
 #REVISED: 7/22/2004  
 FILE: H:\ArcMap\PL\LandUse\LandUse2000\DaneCounty2000.mxd