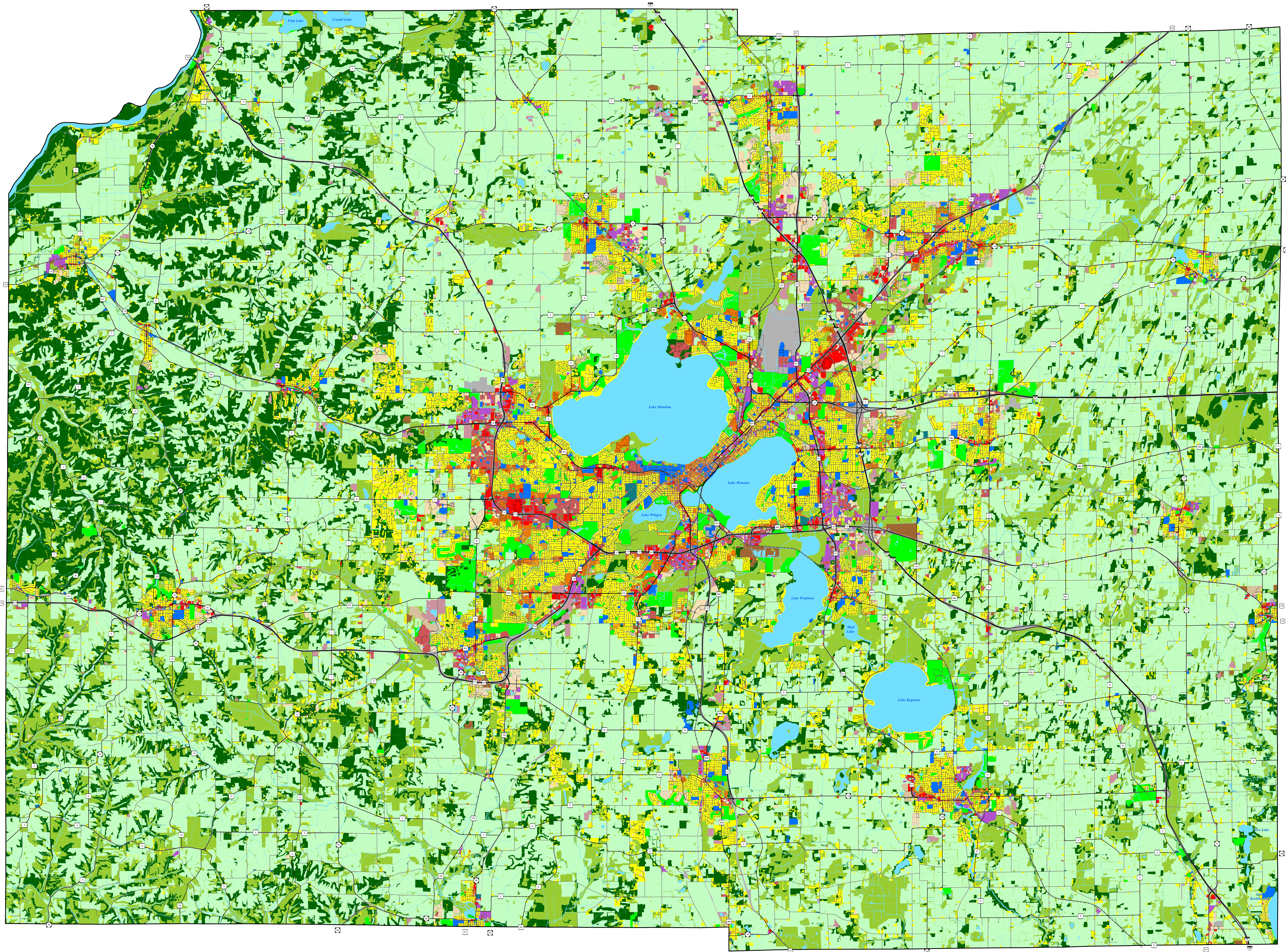


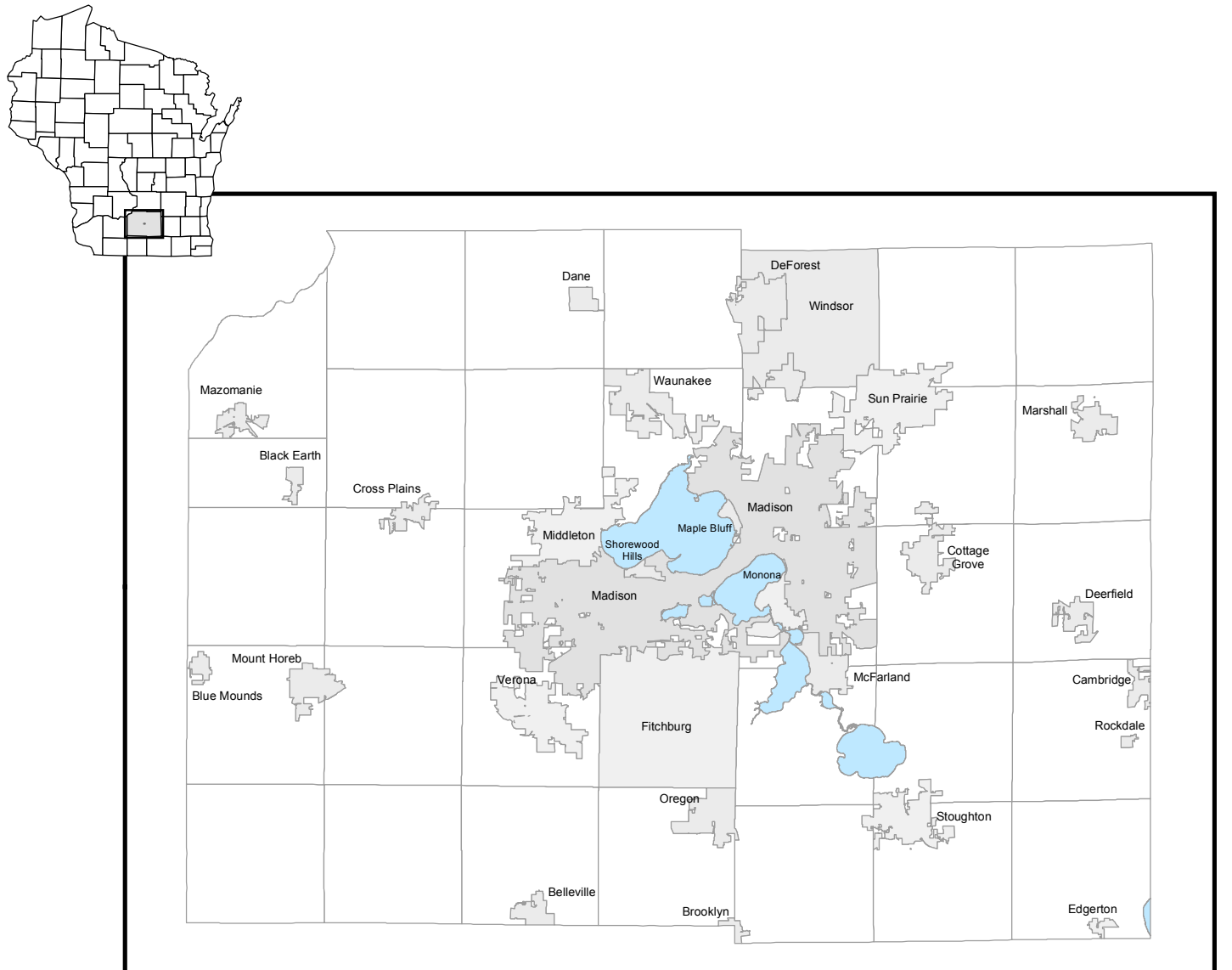
2015 Land Use

Dane County, Wisconsin



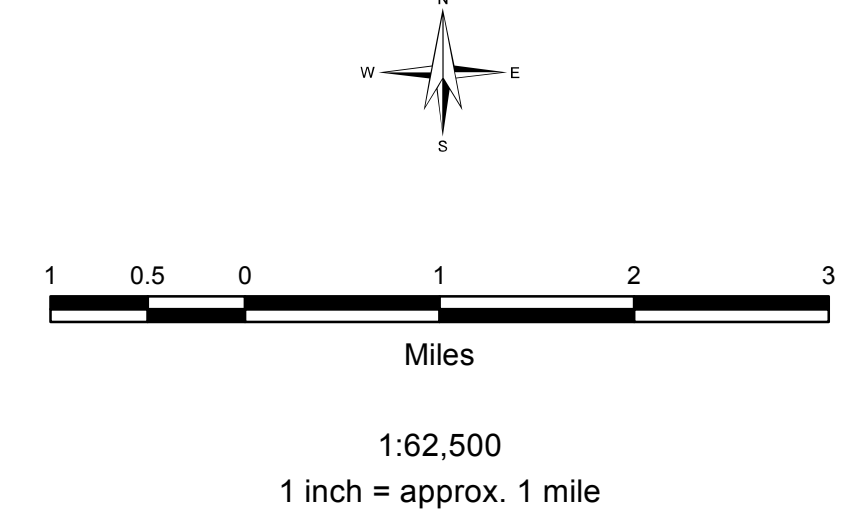
- Single Family Residential
- Two Family Residential
- Multiple Family Residential
- Commercial - Retail Sales
- Commercial - Retail Services
- Industrial
- Extractive
- Institutional/Governmental
- Transportation
- Communication and Utilities
- Recreation
- Cemetery
- Woodlands
- Agriculture
- Undeveloped (non-agriculture)
- Vacant
- Under Construction
- Open Water

- Fluctuating
- Intermittent
- Perennial



Prepared by staff to the

 Transportation Planning Board
 Date Revised: 4/10/2017



Coordinate System: NAD 1983 HARN WISCRS Dane County Feet
 Projection: Lambert Conformal Conic

Source Info:
 Land Use: 2015 (CARPC)
 Hydrography: 1200, 1:24,000 (WDNR)
 Street Base: 2017, Orthophoto Derived (DCLIO)
 Civil Division Limits: 2017, Annexation Records (DCLIO)

User Name: plms
 Date Printed: 4/10/2017
 Date Saved: 4/10/2017 10:05:14 AM
 Document Path: M:\MPO_GIS\Users\Can_B\ArcMap\PJ\LandUseLandUse2015\Map\LandUse2015\LandUse.mxd